

Appendix 12.5 – Photomontages

HyNet Carbon Dioxide Pipeline DCO

Planning Act 2008

Document Reference Number: EN070007-PA-PEI-12.5

Applicant: Liverpool Bay CCS Limited

PINS Reference: EN070007

English Version

REVISION: 03

DATE: September 2023

DOCUMENT OWNER: WSP UK Ltd

AUTHOR: Sophie Lockhart

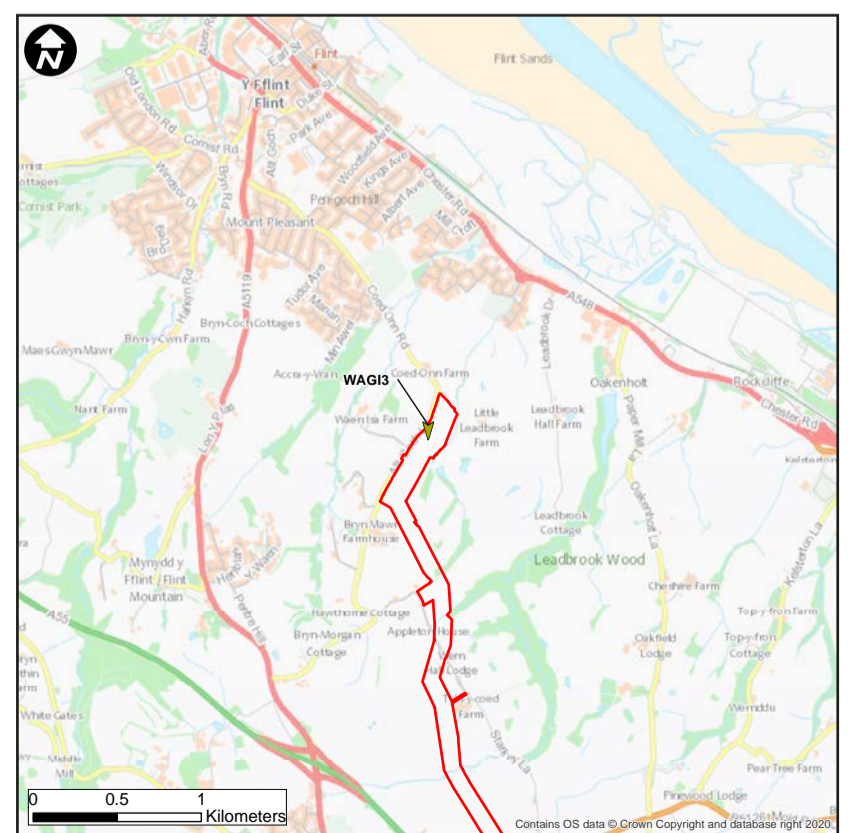
APPROVER: Andrew Williams
PUBLIC

VIEWPOINT WAG13 - Allt-Goch Lane (north), Flint

BASELINE PHOTOMONTAGE



VIEWPOINT LOCATION PLAN



Viewpoint WAG13 - Allt-Goch Lane (north), Flint

Viewpoint Type:
Projection:
Viewpoint Grid Reference:
Viewpoint Height in mAOD:

Type 1
Cylindrical
SJ 25214 71002
56.7m

Direction of View:
Horizontal Field Of View:
Vertical Field of View:
Distance to Kiosk:

South
53.5 degrees
27 degrees
208 m (Approx)

Enlargement Factor:
Photographic Equipment
Date and Time Taken:
Camera Height:

100% @ A1
Canon 6D MKII & 50mm Lens
22.03.21 (Summer) 13:50
1.6m above ground

This image provides landscape and visual context only
View flat at a comfortable arm's length. If viewing on a screen
enlarge to full screen height.



VIEWPOINT WAG13 - Allt-Goch Lane (north), Flint

YEAR 1 PHOTOMONTAGE - FLINT AGI



YEAR 15 PHOTOMONTAGE - FLINT AGI



Viewpoint WAG13 - Allt-Goch Lane (north), Flint

Viewpoint Type:
Projection:
Viewpoint Grid Reference:
Viewpoint Height in mAOD:

Type 1
Cylindrical
SJ 25214 71002
56.7m

Direction of View:
Horizontal Field Of View:
Vertical Field of View:
Distance to Kiosk:

South
53.5 degrees
27 degrees
208 m (Approx)

Enlargement Factor:
Photographic Equipment
Date and Time Taken:
Camera Height:

100% @ A1
Canon 6D MKII & 50mm Lens
22.03.21 (Summer) 13:50
1.6m above ground

This image provides landscape and visual context only
View flat at a comfortable arm's length. If viewing on a screen
enlarge to full screen height.

HyNet North West Carbon Dioxide
Pipeline DCO
EN070007-APP-ES-12.5-Sheet 3



VIEWPOINT WAGI4 - Allt-Goch Lane (south), Flint

BASELINE PHOTOMONTAGE



VIEWPOINT LOCATION PLAN



Viewpoint WAGI4 - Allt-Goch Lane (south), Flint

Viewpoint Type: Type 1
Projection: Cylindrical
Viewpoint Grid Reference: SJ 24932 70542
Viewpoint Height in mAOD: 82.6m

Direction of View: North-East
Horizontal Field Of View: 53.5 degrees
Vertical Field of View: 27 degrees
Distance to Kiosk: 290 m (Approx)

Enlargement Factor: 100% @ A1
Photographic Equipment: Canon 6D MKII & 50mm Lens
Date and Time Taken: 22.03.21 (Summer) 14:25
Camera Height: 1.6m above ground

This image provides landscape and visual context only
View flat at a comfortable arm's length. If viewing on a screen
enlarge to full screen height.

HyNet North West Carbon Dioxide
Pipeline DCO
EN070007-APP-ES-12.5-Sheet 4



VIEWPOINT WAGI4 - Allt-Goch Lane (south), Flint

YEAR 1 PHOTOMONTAGE - FLINT AGI



YEAR 15 PHOTOMONTAGE - FLINT AGI



Viewpoint WAGI4 - Allt-Goch Lane (south), Flint

Viewpoint Type:
Projection:
Viewpoint Grid Reference:
Viewpoint Height in mAOD:

Type 1
Cylindrical
SJ 24932 70542
82.6m

Direction of View:
Horizontal Field Of View:
Vertical Field of View:
Distance to Kiosk:

North-East
53.5 degrees
27 degrees
290 m (Approx)

Enlargement Factor:
Photographic Equipment
Date and Time Taken:
Camera Height:

100% @ A1
Canon 6D MKII & 50mm Lens
22.03.21 (Summer) 14:25
1.6m above ground

This image provides landscape and visual context only
View flat at a comfortable arm's length. If viewing on a screen
enlarge to full screen height.

HyNet North West Carbon Dioxide
Pipeline DCO
EN070007-APP-ES-12.5-Sheet 5

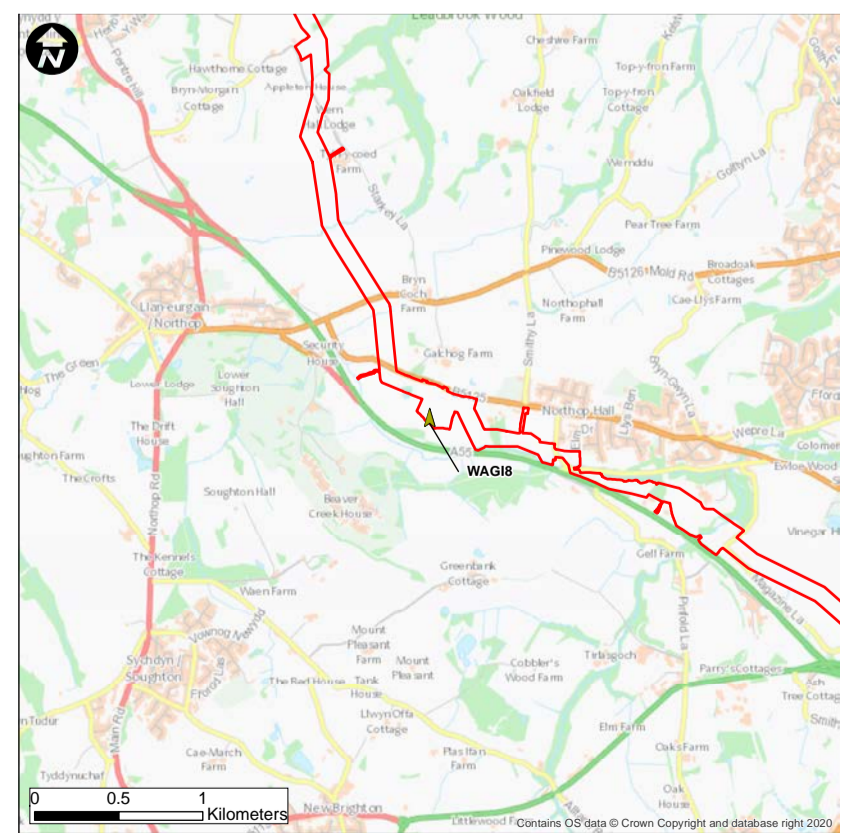


VIEWPOINT WAG18 - Nr Northop Hall Expressway, Flintshire

BASELINE PHOTOMONTAGE



VIEWPOINT LOCATION PLAN



Viewpoint WAG18 - Nr Northop Hall Expressway,
Flintshire

Viewpoint Type:
Projection:
Viewpoint Grid Reference:
Viewpoint Height in mAOD:

Type 1
Cylindrical
SJ 25950 67770
113.8m

Direction of View:
Horizontal Field Of View:
Vertical Field of View:
Distance to Kiosk:

North-West
53.5 degrees
27 degrees
193 m (Approx)

Enlargement Factor:
Photographic Equipment
Date and Time Taken:
Camera Height:

100% @ A1
Canon 6D MKII & 50mm Lens
20.01.23 (Winter) 11:59
1.6m above ground

This image provides landscape and visual context only
View flat at a comfortable arm's length. If viewing on a screen
enlarge to full screen height.

HyNet North West Carbon Dioxide
Pipeline DCO
EN070007-APP-ES-12.5-Sheet 6



VIEWPOINT WAG18 - Nr Northop Hall Expressway, Flintshire

YEAR 1 PHOTOMONTAGE - NORTHOP HALL AGI



YEAR 15 PHOTOMONTAGE - NORTHOP HALL AGI



Viewpoint WAG18 - Nr Northop Hall Expressway,
Flintshire

Viewpoint Type:
Projection:
Viewpoint Grid Reference:
Viewpoint Height in mAOD:

Type 1
Cylindrical
SJ 25950 67770
113.8m

Direction of View:
Horizontal Field Of View:
Vertical Field of View:
Distance to Kiosk:

North-West
53.5 degrees
27 degrees
193 m (Approx)

Enlargement Factor:
Photographic Equipment
Date and Time Taken:
Camera Height:

100% @ A1
Canon 6D MKII & 50mm Lens
20.01.23 (Winter) 11:59
1.6m above ground

This image provides landscape and visual context only
View flat at a comfortable arm's length. If viewing on a screen
enlarge to full screen height.

HyNet North West Carbon Dioxide
Pipeline DCO
EN070007-APP-ES-12.5-Sheet 7

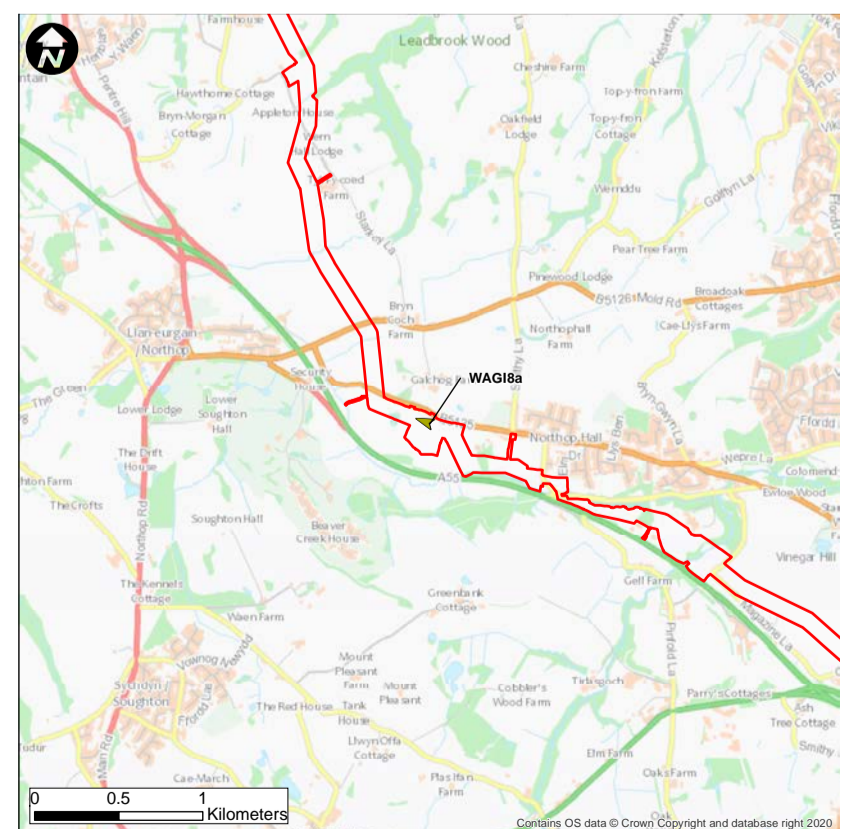


VIEWPOINT WAG18a - Village Road, Northop Hall, Flintshire

BASELINE PHOTOMONTAGE



VIEWPOINT LOCATION PLAN



Viewpoint WAG18a - Village Road, Northop Hall,
Flintshire

Viewpoint Type: Type 1
Projection: Cylindrical
Viewpoint Grid Reference: SJ 26024 67926
Viewpoint Height in mAOD: 119.8m

Direction of View: West
Horizontal Field Of View: 53.5 degrees
Vertical Field of View: 27 degrees
Distance to Kiosk: 114 m (Approx)

Enlargement Factor: 100% @ A1
Photographic Equipment: Canon 6D MKII & 50mm Lens
Date and Time Taken: 20.01.23 (Winter) 12.54
Camera Height: 1.6m above ground

This image provides landscape and visual context only
View flat at a comfortable arm's length. If viewing on a screen
enlarge to full screen height.

HyNet North West Carbon Dioxide
Pipeline DCO
EN070007-APP-ES-12.5-Sheet 8



VIEWPOINT WAG18a - Village Road, Northop Hall, Flintshire

YEAR 1 PHOTOMONTAGE - NORTHOP HALL AGI



YEAR 15 PHOTOMONTAGE - NORTHOP HALL AGI



Viewpoint WAG18a - Village Road, Northop Hall,
Flintshire

Viewpoint Type: Type 1
Projection: Cylindrical
Viewpoint Grid Reference: SJ 26024 67926
Viewpoint Height in mAOD: 119.8m

Direction of View: West
Horizontal Field Of View: 53.5 degrees
Vertical Field of View: 27 degrees
Distance to Kiosk: 114 m (Approx)

Enlargement Factor: 100% @ A1
Photographic Equipment: Canon 6D MKII & 50mm Lens
Date and Time Taken: 20.01.23 (Winter) 12.54
Camera Height: 1.6m above ground

This image provides landscape and visual context only
View flat at a comfortable arm's length. If viewing on a screen
enlarge to full screen height.

HyNet North West Carbon Dioxide
Pipeline DCO
EN070007-APP-ES-12.5-Sheet 9

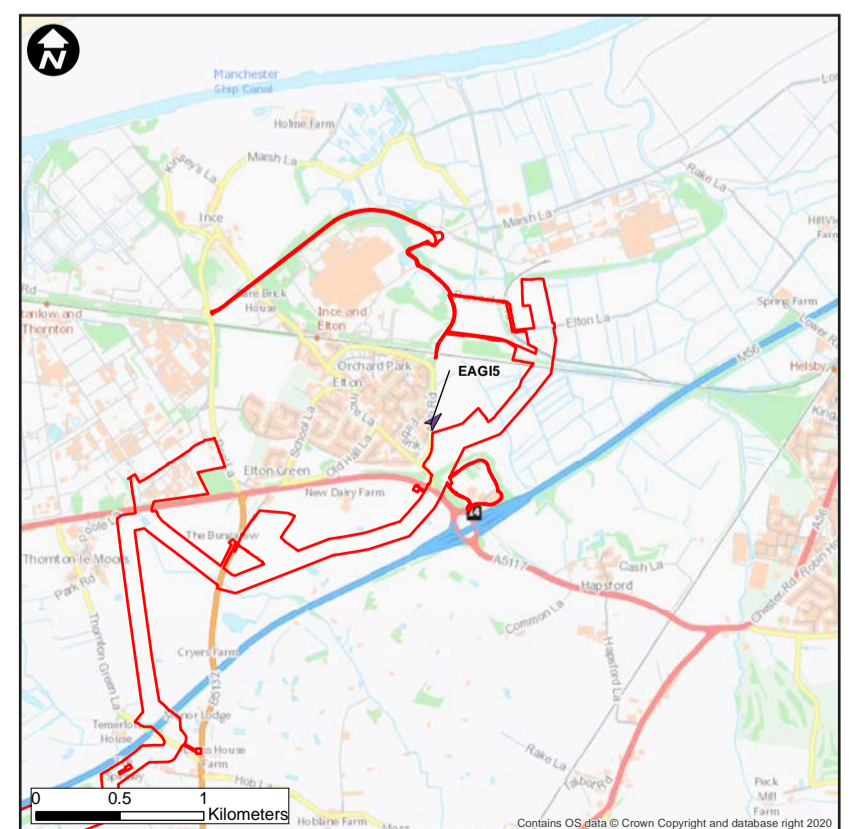


VIEWPOINT EAG15- Ash Road, Elton

BASELINE PHOTOMONTAGE



VIEWPOINT LOCATION PLAN





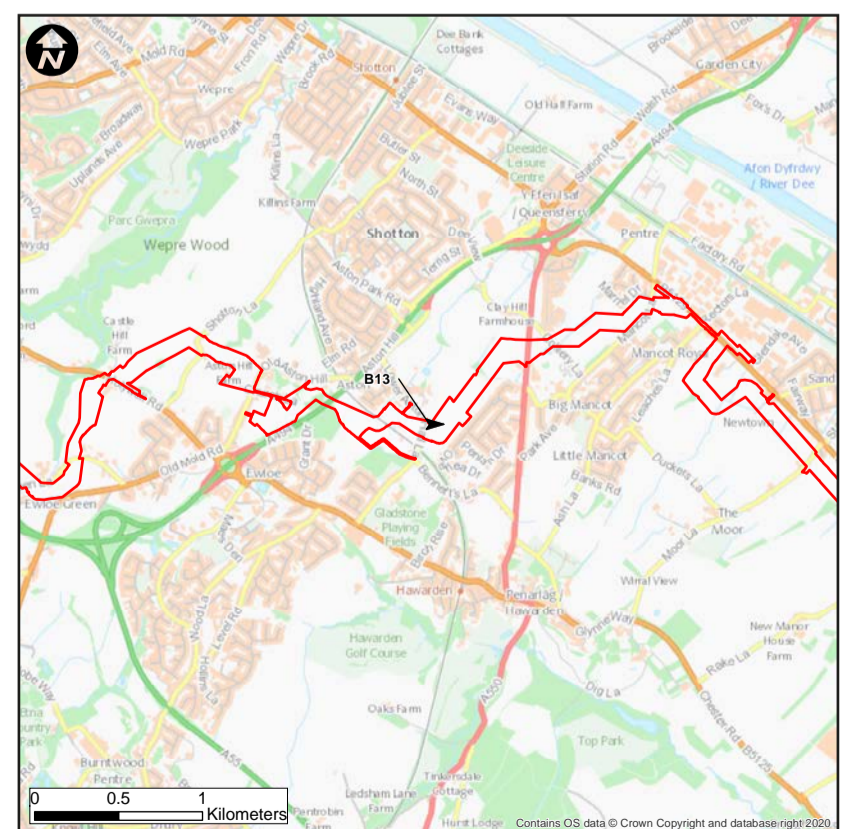
Note 1 - No visibility of the Kiosk (Ince AGI) is possible in summer months and it is not expected in winter months owing to the layering of existing vegetation. A red outline is provided to demonstrate where the Kiosk sits, however, this will be beyond background vegetation.

VIEWPOINT B13 - Upper Aston Hall Lane, Hawarden, Aston

BASELINE PHOTOMONTAGE



VIEWPOINT LOCATION PLAN



Viewpoint B13 - Upper Aston Hall Lane, Hawarden,
Aston

Viewpoint Type:
Projection:
Viewpoint Grid Reference:
Viewpoint Height in mAOD:

Type 1
Cylindrical
SJ 30951 66842
39.1m

Direction of View:
Horizontal Field Of View:
Vertical Field of View:
Distance to Kiosk:

East
53.5 degrees
27 degrees
187m (Approx)

Enlargement Factor:
Photographic Equipment
Date and Time Taken:
Camera Height:

100% @ A1
Canon 6D MKII & 50mm Lens
06.05.22 (Summer) 11:19
1.6m above ground

This image provides landscape and visual context only
View flat at a comfortable arm's length. If viewing on a screen
enlarge to full screen height.

HyNet North West Carbon Dioxide
Pipeline DCO
EN070007-APP-ES-12.5-Sheet 12



VIEWPOINT B13 - Upper Aston Hall Lane, Hawarden, Aston

YEAR 1 PHOTOMONTAGE - ASTON HILL BVS



YEAR 15 PHOTOMONTAGE - ASTON HILL BVS



Viewpoint B13 - Upper Aston Hall Lane, Hawarden,
Aston

Viewpoint Type:
Projection:
Viewpoint Grid Reference:
Viewpoint Height in mAOD:

Type 1
Cylindrical
SJ 30951 66842
39.1m

Direction of View:
Horizontal Field Of View:
Vertical Field of View:
Distance to Kiosk:

East
53.5 degrees
27 degrees
187m (Approx)

Enlargement Factor:
Photographic Equipment
Date and Time Taken:
Camera Height:

100% @ A1
Canon 6D MKII & 50mm Lens
06.05.22 (Summer) 11:19
1.6m above ground

This image provides landscape and visual context only
View flat at a comfortable arm's length. If viewing on a screen
enlarge to full screen height.

HyNet North West Carbon Dioxide
Pipeline DCO
EN070007-APP-ES-12.5-Sheet 13

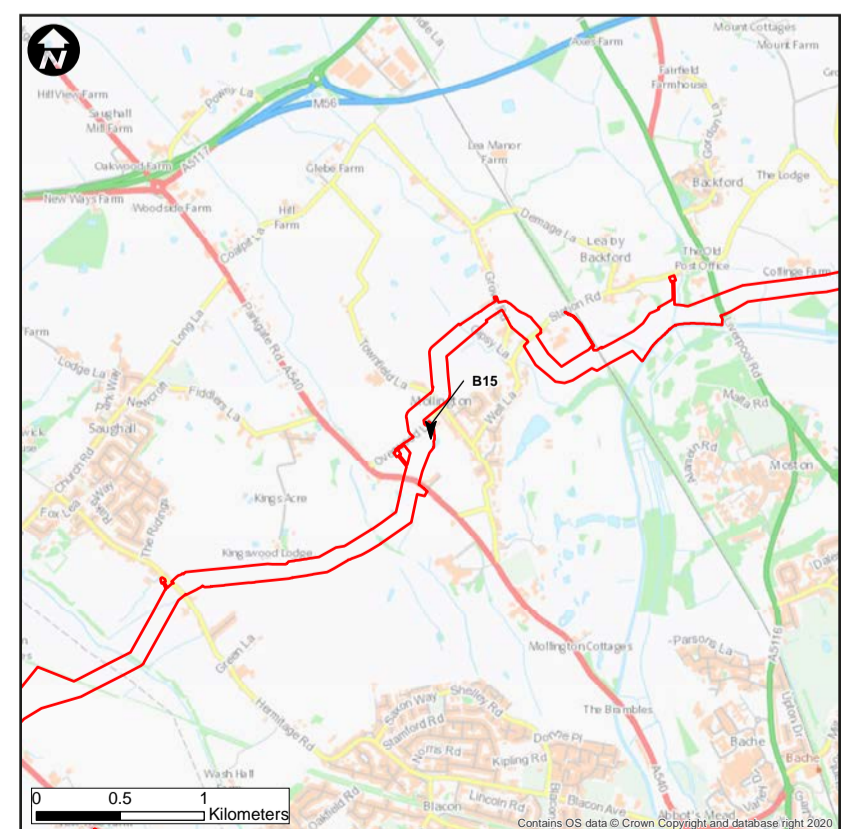


VIEWPOINT B15 - Overwood Lane, Mollington

BASELINE PHOTOMONTAGE



VIEWPOINT LOCATION PLAN



Viewpoint B15 - Overwood Lane, Mollington

Viewpoint Type: Type 1
Projection: Cylindrical
Viewpoint Grid Reference: SJ 38237 70385
Viewpoint Height in mAOD: 34.8

Direction of View: South
Horizontal Field Of View: 53.5 degrees
Vertical Field of View: 27 degrees
Distance to Kiosk: 204 m (Approx)

Enlargement Factor: 100% @ A1
Photographic Equipment: Canon 6D MKII & 50mm Lens
Date and Time Taken: 06.05.22 (Summer) 13:20
Camera Height: 1.6m above ground

This image provides landscape and visual context only
View flat at a comfortable arm's length. If viewing on a screen
enlarge to full screen height.

HyNet North West Carbon Dioxide
Pipeline DCO
EN070007-APP-ES-12.5-Sheet 14



VIEWPOINT B15 - Overwood Lane, Mollington

YEAR 1 PHOTOMONTAGE - MOLLINTON BVS



YEAR 15 PHOTOMONTAGE - MOLLINTON BVS



Viewpoint B15 - Overwood Lane, Mollington

Viewpoint Type: Type 1
Projection: Cylindrical
Viewpoint Grid Reference: SJ 38237 70385
Viewpoint Height in mAOD: 34.8

Direction of View: South
Horizontal Field Of View: 53.5 degrees
Vertical Field of View: 27 degrees
Distance to Kiosk: 204 m (Approx)

Enlargement Factor: 100% @ A1
Photographic Equipment: Canon 6D MKII & 50mm Lens
Date and Time Taken: 06.05.22 (Summer) 13:20
Camera Height: 1.6m above ground

This image provides landscape and visual context only
View flat at a comfortable arm's length. If viewing on a screen
enlarge to full screen height.

HyNet North West Carbon Dioxide
Pipeline DCO
EN070007-APP-ES-12.5-Sheet 15

